



# PacketShaper

## WAN Application Optimization Solutions

Successful distributed enterprises depend on collaborative, customer-critical applications to run their business. They can't afford "operational paralysis" due to rigid networks that aren't able to support these applications. The Packeteer® PacketShaper® is an intelligent overlay that bridges the gap between the network and applications, delivering integrated visibility, control, compression and acceleration in a single device, ensuring optimal application performance and a great user experience.

Critical applications need to move at the speed of business. PacketShaper provides the WAN Optimization functionality needed through a series of modules — monitoring, shaping, compression and acceleration

### MONITORING MODULE

Before you can optimize application performance, you need an accurate picture of network traffic. PacketShaper automatically classifies and measures network applications, providing the insight of a probe but with deeper, application-intelligent Layer 7 Plus visibility. In addition to delivering network and application utilization and performance data, the Monitoring Module validates common protocols and tracks what happens to each connection established by each application. Monitoring also breaks down traffic per application and per site at a granular level, recording peak and average utilization rates, bytes transmitted, availability, utilization, top talkers/listeners, network efficiency and much more.

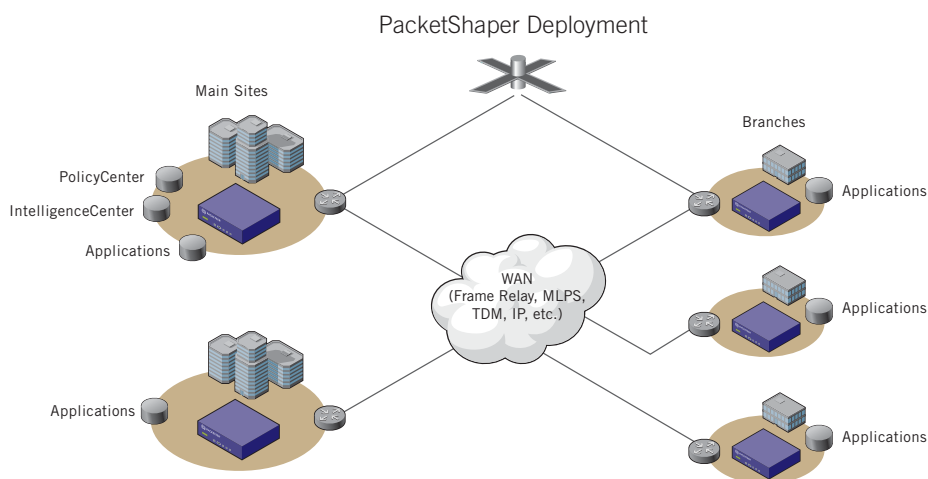
### SHAPING MODULE

The PacketShaper Shaping Module provides Quality of Service (QoS) provisioning that helps you control traffic to ensure that latency-sensitive, customer-critical applications get the bandwidth they need to perform at their peak.

With patented TCP rate control, the Shaping Module can automatically enforce appropriate transfer rates for computers at the far end of the network to deliver true bi-directional QoS.

### COMPRESSION MODULE

The PacketShaper Compression Module instantly increases WAN capacity, improving application performance and user response times. Using a symmetric, application-intelligent architecture and multiple data reduction methods, the Compression Module intelligently selects what traffic to compress and which technology to use — increasing capacity from two to ten times, reducing bandwidth usage and minimizing WAN latency.



PacketShaper is the only all-in-one modular solution that extends application monitoring, shaping, compression and acceleration to the edge of the enterprise.

## Features and Benefits

### Monitoring Module

Identify and classify applications with Layer 7 Plus technology. Get the information you need to solve application performance issues.

### Shaping Module

Fix critical application performance issues by allocating bandwidth to ensure applications perform.

### Compression Module

Create more bandwidth from existing physical links and enhance the user experience.

### Acceleration Module

Speed the performance of applications slowed by WAN latency.

## ACCELERATION MODULE

The PacketShaper Acceleration Module allows applications to increase their flow rates to speed completion of big jobs and overcomes problems created by high-latency environments. By building on patented PacketShaper application

intelligence, the Acceleration Module speeds web applications, time-sensitive transaction response times and file transfers — so LAN-oriented applications finally have the freedom they need to run efficiently over the WAN.

Working in concert with the Monitoring, Shaping and Compression Modules, the Acceleration Module adds even more comprehensive application performance capabilities to PacketShaper appliances.

## PacketShaper Specifications



PacketShaper Selected	900 Lite	900	1400 Lite	1400	1700	3500	7500	10000	
Maximum Capacity									
IP Flows (TCP/Other IP)*	5,000/2,500	5,000/2,500	5,000/2,500	5,000/2,500	30,000/15,000	40,000/20,000	200,000/100,000	300,000/150,000	
Classes	64	256	64	256	512	512	1,024	2,048	
Dynamic Partitions	**	**	**	**	1,024	1,024	10,000	20,000	
Static Partitions	32	128	32	128	256	256	512	1,024	
Shaping Policies	64	256	64	256	512	512	1,024	2,048	
Max # of Matching Rules	320	640	320	640	2,562	2,562	5,120	5,000	
IP Hosts*	5,000	5,000	5,000	5,000	15,000	20,000	150,000	200,000	
Active Tunnels	5	10	5	10	15	30	100	1,000	
Software Options and Upgrades									
Monitoring Only	Yes		Yes		Yes		Yes	Yes	
Line Speeds	128 Kbps 512 Kbps 2 Mbps — — —		128 Kbps 512 Kbps 2 Mbps — — —		512 Kbps 2 Mbps 6 Mbps 10 Mbps 45 Mbps —		512 Kbps 2 Mbps 6 Mbps 10 Mbps 45 Mbps —	10 Mbps 45 Mbps 100 Mbps 200 Mbps 310 Mbps 622 Mbps 1G Mbps	45 Mbps 100 Mbps 200 Mbps 310 Mbps 622 Mbps 1G Mbps
Compression***	2 Mbps		2 Mbps		20 Mbps		20 Mbps	45 Mbps	155 Mbps
Interfaces									
Network Interfaces (in and out)	Copper: 10/100 Mbps		Copper: 10/100 Mbps		Copper: 10/100/1000 Mbps		Copper: 10/100/1000 Mbps	Copper: 10/100/1000 Mbps Fiber: 1000 Mbps	Copper: 10/100/1000 Mbps Fiber: 1000 Mbps
LAN Expansion Module (max 2)	Backup fail-to-wire pair built in		Backup pair built in		N/A		Copper: 10/100/1000 Mbps Fiber SFP	Copper: 10/100/1000 Mbps Fiber SFP	Copper: 10/100/1000 Mbps Fiber SFP
Out of Band Management	Through backup ports		Through backup ports		Yes		Yes	Yes	With LEM
Console Port	All have RS-232 (AT-compatible) with male DB-9 connectors								
Dimensions (All are 19 in. rack mountable)									
Height	1U (1.75 in/4.45 cm)		1U (1.75 in/4.45 cm)		1U (1.75 in/4.45 cm)		2U (3.5 in/8.89 cm)	2U (3.5 in/8.89 cm)	2U (3.5 in/8.89 cm)
Width	8.66 in (22.00 cm)		16.97 in (43.10 cm)		17 in (43.18 cm)		17.35 in (44.07 cm)	17.35 in (44.07 cm)	17.31 in (43.97 cm)
Depth	9.68 in (24.60 cm)		10.63 in (27.00 cm)		14 in (35.56 cm)		16 in (40.64 cm)	16 in (40.64 cm)	20.25 in (51.43 cm)
Weight	4.50 lbs (2.05 kg)		12.79 lbs (5.80 kg)		14 lb (6.35 kg)		18.04 lb (8.18 kg)	20.48 lb (9.29 kg)	33 lb (14.97 kg)
Power									
Power Supply	100/240 VAC; 50/60 Hz, 2 A		100/240 VAC; 50/60 Hz, 5 A		100/240 VAC; 50/60 Hz, 2.5 A		100/240 VAC; 50/60 Hz, 2.5 A	100/240 VAC; 50/60 Hz, 2.5 A	100/240 VAC; 50/60 Hz, 6 A
Dual, Redundant Load Sharing	No		No		No		No	Yes; Hot-swappable	Yes; Hot-swappable
Additional Features									
Interoperability	XML, XML and CGI APIs, SNMP MIB, SNMP event traps, HP OpenView, infoVista, CA eHealth, Aprisma Spectrum, Micromuse Netcool								
Device Management	Console access, Web browser interface, Telnet CLI, SNMP Packeteer MIB and MIB-II support								
Agency Approval									
Safety	IEC 60950-1; EN 60950-1+ A11, CAN/CSA-C22 2 No, 60950-1:03; UL 60950-1:03; EN 60825-1,-2 Class 1 Laser								
EMC/EMI	AS/NZS 3548 Class A; AS/NZS 4252.1; ICES-003 Class A; EMC Direct B9/336/EEC; EN 300 386 v1.3.1: 2001 Telecom EMC standard; EMC Directive 73/23/EEC; EMC Directive 93/68/EEC; EN 55022: 1998 Class A; EN 61000-3-2: 1995_A1(98) + A2(98), & prA1 4(00); EN 61000-3-3:1:1995; EN 55024:1998; VCCI:2002 Class A; KN55022 Class A; KN6100-4-2,3,4,5,6,8,11; GOST-R 60950-2002; GOST-R 5131B.22,-24-99; FCC 47 CFR part 15, subpart B Class A; CNS 13438 Class A								

Note: Not all capacity specifications can be maximized simultaneously

\* PacketShaper can support more hosts and flows, these figures represent ideal maximums for producing optimal results; numbers are rounded up or down to the nearest thousand. These maximums represent concurrent flows. Performance may vary due to the number of new flows, traffic type, traffic mix and other conditions unique to each deployment.  
 \*\* No extra partitions are specifically allocated for dynamic partitions. The 1400 Lite and 1400 have a pool of partitions to be shared between static and dynamic partitions.  
 \*\*\* Refers to post-compressed traffic rates - maximum compressed throughput specifications for PacketShaper are lower when compression is enabled due to the extra processing power required to compress traffic.



**World Headquarters**  
**Packeteer, Inc.**  
 10201 N. De Anza Blvd.  
 Cupertino, CA 95014  
 USA  
 T +1.408.873.4400  
 +1.800.697.2253  
 F +1.408.873.4410  
 www.packeteer.com

**Packeteer Europe**  
 Packeteer Europe B.V.  
 Louis Braillelaan 80  
 2719 EK Zoetermeer  
 The Netherlands  
 T +31 88 7427377  
 F +31 88 7427300

**Packeteer Japan**  
 Packeteer Japan Inc KK  
 2-7-1, Nishi-Shinjuku  
 Shinjuku-ku Tokyo 163-0704  
 Japan  
 T +81 0 3 5339 7970  
 F +81 0 3 5339 7979

**Packeteer Asia Pacific**  
 Packeteer Asia Pacific Ltd.  
 Suite 1507, 15th Floor,  
 Cityplaza Four  
 12 Taikoo Wan Road  
 Taikoo Shing, Hong Kong  
 T +852 2850 5048  
 F +852 2850 5648